



WhatsGPS

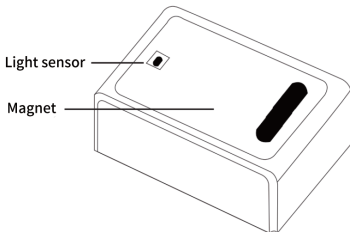
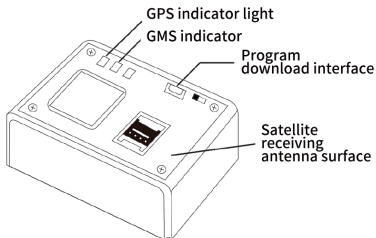
2G Vehicle GPS Tracker

Model:S18



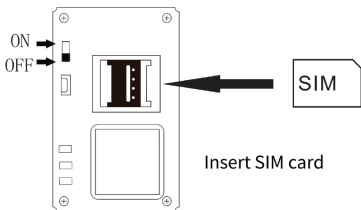
User Manual

Installation instructions



Install SIM card

Open the face cover and insert the SIM card in the right direction as shown in the picture below
(note: insert SIM card must be done in shutdown state)



Fill in the mobile phone number in the box below, so that you can recharge later or check the working status of the locator.

(if there is no phone number on the back of the card, the 20-digit ICCID number on the back of the card)

Note: SIM card needs to open GPRS flow function, SMS alarm needs SIM card support to achieve!

Switch on/off

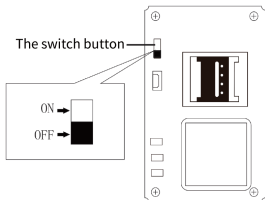
Switch on:

When the terminal is turned ON for the first time, in the shutdown state, turn the switch to the ON position. GSM(green) light and GPS (blue) light of the host slowly flash to indicate normal startup. The GPS module starts to search for signals. If the device has been unable to locate, it will start to dial and send data online after 3 minutes, and then enter the sleep state after sending data.

Time mode wake up or light sense wake up, data send state as above.

Switch OFF:

in the power on state, turn the switch to OFF position and the host machine will shut down immediately.



Login monitoring interface and install mobile APP

- Please log in the dealer designated location service platform for corresponding Settings and functional operations.

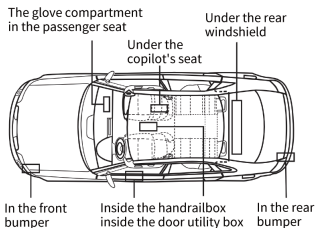
Account: IMEI (in the sticker)

Password: 123456

- Please log in the dealer's designated website to download the mobile client software for installation

Installation site

The GPS antenna of the positioner is on the front of the main engine, try to make sure that the main engine is facing the sky. The front of the main engine cannot be completely covered by metal and buildings, or it will lead to positioning or positioning accuracy is poor.



Notice :

1. The magnet on the back of the product cannot be directly exposed to high temperature, such as the exhaust pipe of the car, or the magnet will fail.
2. The phone card in the device needs to be paid regularly, and the device cannot be monitored offline due to the arrears.
3. After the GPS is installed for the first time, be sure to test the normal monitoring before leaving.
4. The strong magnetic on the back of the host cannot touch the hard disk digital products, which will cause damage to the hard disk.
5. If there is any problem in use, please contact the dealer's customer service.

Installation site

Type	Status
Communication indicator (Green)	Fast flash: Working, device online
	Slow flash: GPRS with signal
	Dark: Abnormal communication, power switch OFF or device goes to sleep mode
Location indicator (Yellow)	Fast flash: Located
	Slow flash: Search the Signal, but can not locate
	Dark: GPS module broken, powerswitch OFF or device goes to sleepmode

Functions

Functions	Specifications
Timed return mode	Timing return, according to the set time return position data
Week pattern	Set a time point and choose a day or days of the week to send location data after sleep
Alarm clock mode	Up to 4 groups of wake up time can be set every day. Wake up automatically at the set time and sleep after sending location data
Base station +GPS positioning	When GPS can not locate the case automatically enable base station location
Tamper alarm	Detection from dark to light when the realization of anti - demolition alarm
Anti-fake base station	When the terminal detects the pseudo-base station, it will reject the connection and prevent detection
No-wiring installation	Strong magnetic device

Parameter

Model: S18

Location Type: GPS/BDS/LBS positioning

Checking method: PC/IOS/Android

Frequency : 850/900/1800/1900

Antenna: GSM

Alarm: Fence alarm, Overspeed alarm,Disassemble
alarm

GPS: GPS/BDS

GPRS: CLASS B

Battery: 3.3V/4200mAh

Standby time: 3 year

Size: 73*42*31mm

Weight: 100G

Working temperature: -25° C~75° C

Battery safety instructions

If you feel abnormal when operating the device, please refer to the following problems and solutions. If you cannot solve the problem, please contact the seller or service provider

Please use the battery specified by the original factory of your terminal. The use of any other accessories will invalidate all warranty services. If the use of non-original accessories causes damage to the terminal, the manufacturer will not assume any warranty responsibility

- ▶ Do not allow metal objects to short-circuit the battery contactor
- ▶ Do not bend or force open the battery
- ▶ Do not immerse the battery in water or fire

If the temperature is below -25°C ~ 75°C , the battery will not work

- ▶ Do not use the battery with deformed appearance, discoloration, leakage or damaged outer package
- ▶ Do not decompose or modify batteries

Note: after using up the battery, please replace the original battery of the manufacturer (note: the used battery cannot be discarded at will, please pay attention to put it in the recycling position of the waste battery for centralized processing).

Troubleshooting

1. The terminal has been unable to connect to the background server after the first installation. The background display is not online.

1) check whether the main power supply wiring is correct, pay attention not to connect to the internal control line of the car;

2) check whether the SIM is installed correctly, please refer to the installation instructions;

3) check whether the SIM card has opened GPRS service;

4) check whether the parameters are correct through PARAM# instruction;

5) check whether the APN configuration is correct;

6) check whether the vehicle is in the area covered by mobile signal;

7) power on to check the status of LED indicator, both lights are normally on when the connection is normal;

2. The connection platform of the device is normal, but the satellite positioning is abnormal. In this case, please check:

1) please ensure that the equipment is outdoors;

2) check whether there is interference source or signal shield around;

- 3) check the installation position of the equipment, and make the GPS antenna face outwards, not towards the metal surface or wires;
- 4) the GPS signal will be weakened when surrounding tall buildings block it. Please drive to a place with open sky to locate it.

Warranty card

Maintenance record	
Maintenance shop	
Sending date	
Fault description	
Maintenance situation	
IMEI number	
Maintenance person	

Maintenance record	
Maintenance shop	
Sending date	
Fault description	
Maintenance situation	
IMEI number	
Maintenance person	